

ALN OPTIONAL VENA CAVA FILTER WITH HOOK



Jugular - Brachial approach

1 → 2 → 3

1 Take the **Filter Holder**



2 Withdraw the **Dilator**

Insert the tip of the **Filter Holder** into the base of the **Introducer Sheath**. Rotate the **Filter Holder** by one quarter of a turn clockwise onto the base of the **Introducer Sheath**.

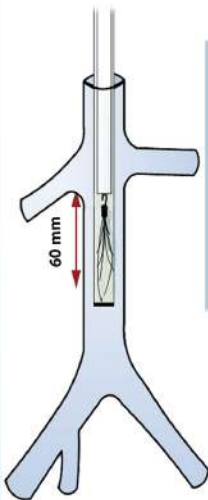


3 Push the filter fully into the **Introducer Sheath** with the finger. Remove the empty **Filter Holder** by rotating it counter-clockwise.

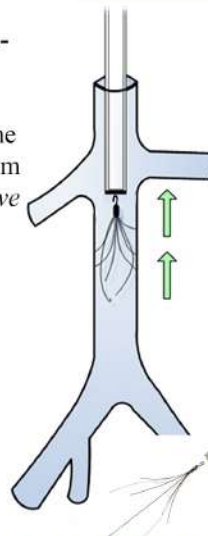


4

4 Move the filter down using the **Pushing Catheter**. Align the Pushing Catheter's black mark with the base of the **Introducer Sheath**. Position the radio-opaque ring of the **7F Introducer Sheath** approximately 60 mm below the lowest renal vein *if prior tests have confirmed possible placement beneath the lowest renal vein* (the filter apex below the lowest renal vein)



5 Pull the **Introducer Sheath** backwards over the **Pushing Catheter** using a very slow -constant movement, without jerking, until the filter is released. Don't push with the **Pushing Catheter** and remove it as soon as the filter is released. Perform a control cavography.



5

Femoral - Popliteal approach

1 → 2 → 3

1 Take the **Filter Holder**



2 Withdraw the **Dilator**

Insert the tip of the **Filter Holder** into the base of the **Introducer Sheath**. Rotate the **Filter Holder** by one quarter of a turn clockwise onto the base of the **Introducer Sheath**.

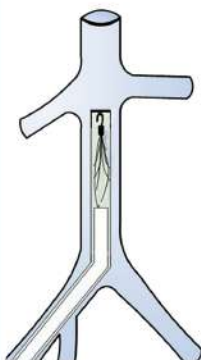


3 Push the filter fully into the **Introducer Sheath** with the finger. Remove the empty **Filter Holder** by rotating it counter-clockwise.

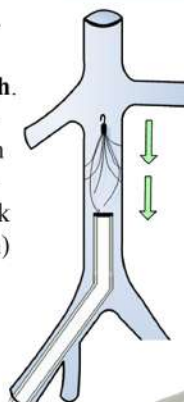


4

4 Move the filter down using the **Pushing Catheter**. Align the Pushing Catheter's black mark with the base of the **Introducer Sheath**. Position the radio-opaque ring of the **7F Introducer Sheath** under the lowest renal vein *if prior tests have confirmed possible placement beneath the lowest renal vein*. (the hook of the filter apex below the lowest renal vein)



5 Pull the **Introducer Sheath** backwards over the **Pushing Catheter** using a very slow -constant movement, without jerking, until the filter is released. Don't push with the **Pushing Catheter** and remove it as soon as the filter is released. Perform a control cavography.



5



Implantation procedure